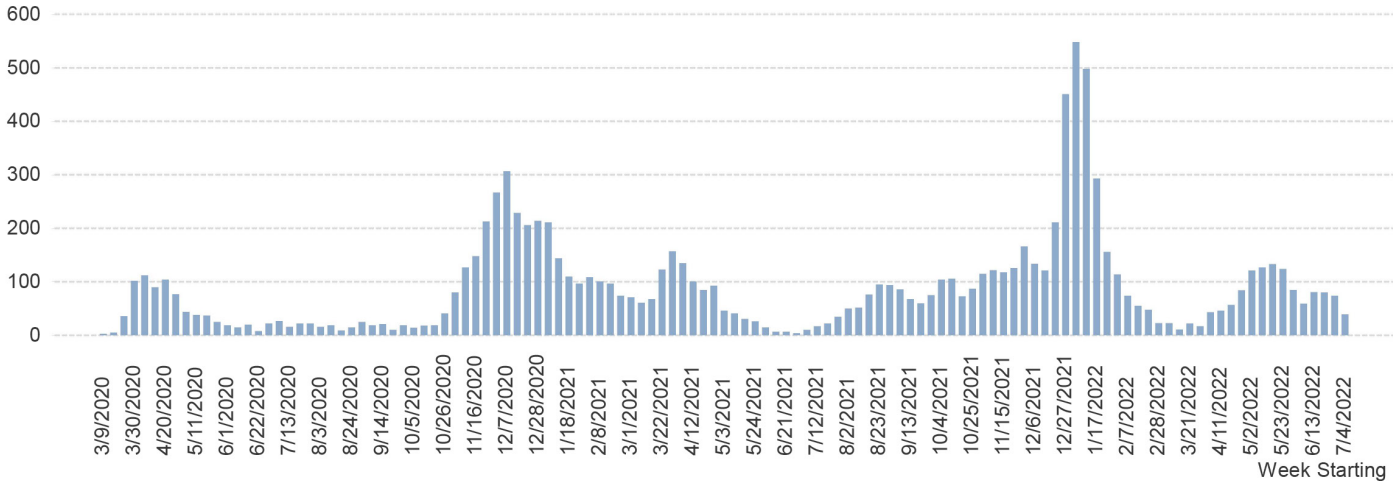


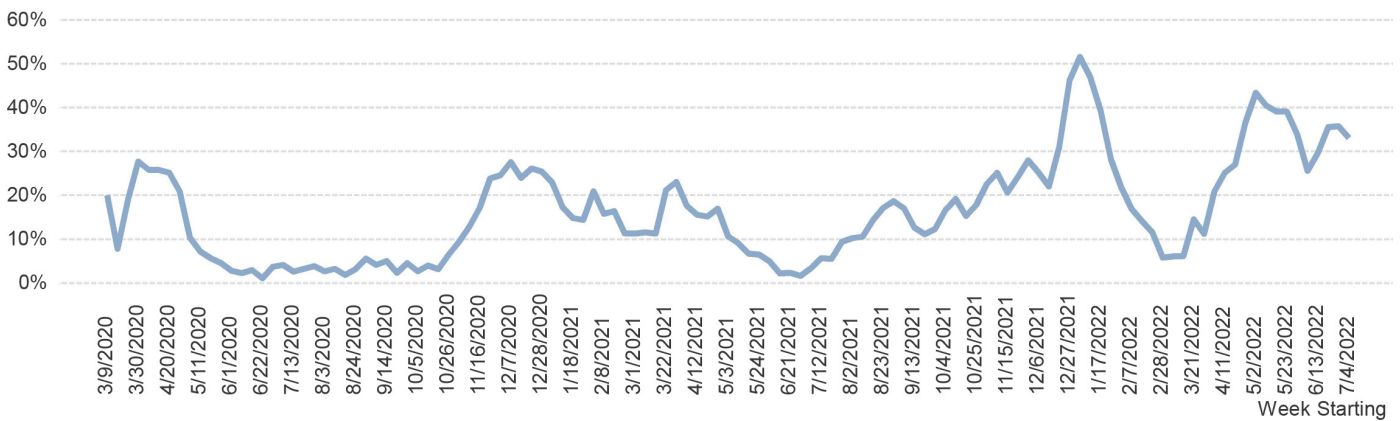
## CURRENT COVID-19 DATA

These metrics are presented to inform the community of the current status on COVID-19 in our community. Please continue to stay diligent utilizing proven infection measures such as masking, social distancing and vaccination.

### Total Patients Tested Positive for COVID-19 by Doylestown Health



### Positivity Rate



Date Range	Positive Tests	Peds Positive Tests (Age 16 and under)	Date Range	Avg Daily Covid Census	Avg Daily Covid Patients in ICU
7/4/22-7/10/22	43	5	7/4/22-7/10/22	9.5	0.0
6/27/22-7/3/22	80	12	6/27/22-7/3/22	6.8	0.0
6/20/22-6/26/22	86	9	6/20/22-6/26/22	8.1	0.4
6/13/22-6/19/22	85	6	6/13/22-6/19/22	5.3	0.1
6/6/22-6/12/22	64	5	6/6/22-6/12/22	5.0	0.0
5/30/22-6/5/22	90	7	5/30/22-6/5/22	5.7	0.3
5/23/22-5/29/22	136	11	5/23/22-5/29/22	7.3	0.6
5/16/22-5/22/22	150	18	5/16/22-5/22/22	9.3	0.4
5/9/22-5/15/22	143	14	5/9/22-5/15/22	9.4	0.4
5/2/22-5/8/22	129	19	5/2/22-5/8/22	6.7	0.1
4/25/22-5/1/22	88	11	4/25/22-5/1/22	3.1	0.1
4/18/22-4/24/22	61	8	4/18/22-4/24/22	3.1	0.0
4/11/22-4/17/22	52	3	4/11/22-4/17/22	0.4	0.0
4/4/22-4/10/22	44	6	4/4/22-4/10/22	0.7	0.0
3/28/22-4/3/22	20	4	3/28/22-4/3/22	0.9	0.0
3/21/22-3/27/22	25	1	3/21/22-3/27/22	1.7	0.0
3/14/22-3/20/22	11	0	3/14/22-3/20/22	2.3	0.1
3/7/22-3/13/22	25	3	3/7/22-3/13/22	3.0	0.0
2/28/22-3/6/22	29	0	2/28/22-3/6/22	3.9	0.6
2/21/22-2/27/22	54	8	2/21/22-2/27/22	3.9	0.4

Positivity Rate is the percentage of patients tested within the Doylestown Health system including both inpatient and outpatient facilities who are diagnosed with COVID-19.

Average Daily Census is the average number of patients in hospital and ICU for the given week.